



四川水发建设有限公司
SICHUAN WATER DEVELOPMENT CONSTRUCTION CO., LTD.

向水而行
WALK TOWARDS
THE WATER

四川水達 向水而行

SICHUAN SHUIJIAN MOVES TOWARDS WATER

地址：成都市高新区天泰路145号特拉克斯国际广场南楼8楼

电话：028-86046258

传真：028-86046258

网址：www.sdgcj.cn

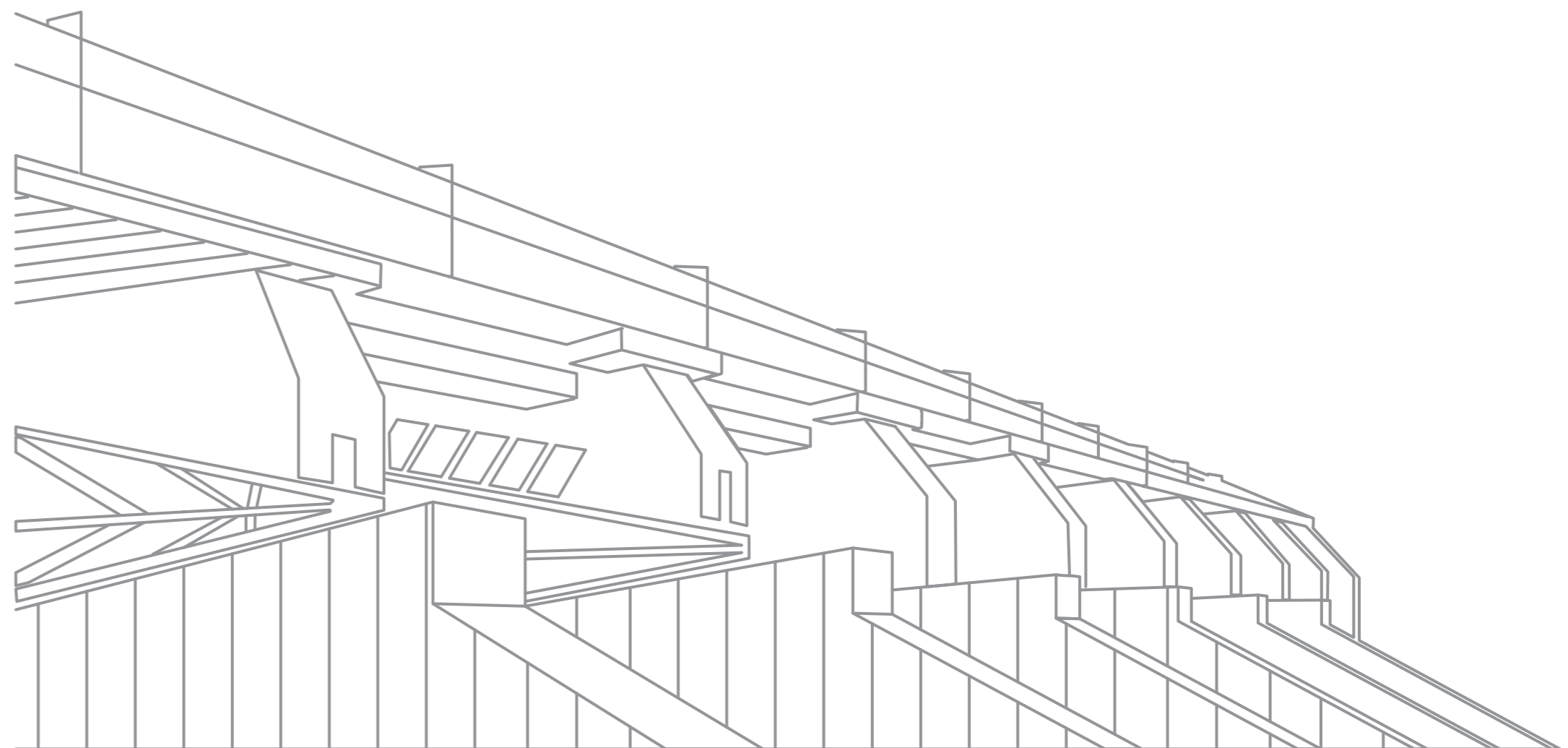
Add: 8 / F, South Building, TRAX International Plaza, No. 145 TianTAI Road, High-tech Zone, Chengdu

Tel: 028-86046258

Fax: 028-86046258

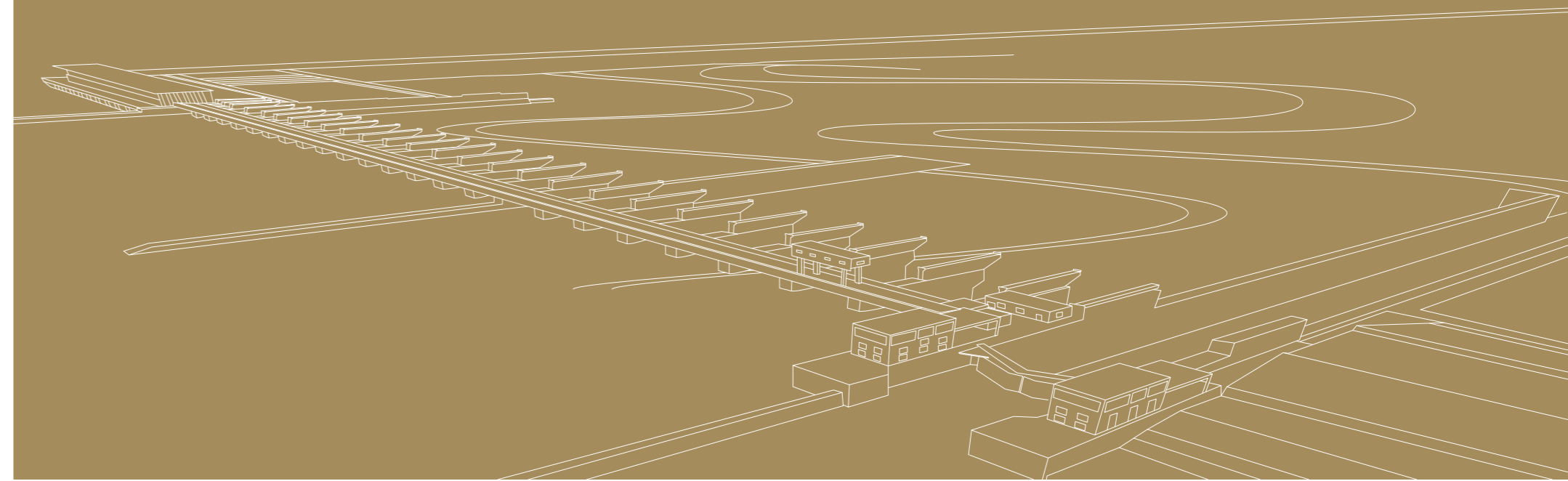
Web: www.sdgcj.cn

岩谷文化 028-84192972



川水善達映初心

GOOD CONSTRUCTION OF SICHUAN WATER REFLECTS THE ORIGINAL INTENTION





承载光荣与梦想，怀揣责任与担当。荣诞自1963年的四川水发建设有限公司，已走过60年的风雨兼程。60年来，我们一路同舟共济、一路灿烂辉煌。

天行健，君子以自强不息，我们始终慎独自励；地势坤，君子以厚德载物，我们始终初心不改。水利人踔厉奋发的场景定格在青山绿水之间，追求卓越的精神浓缩在千秋伟业的汗青里，永不消逝。

雄关漫道真如铁，而今迈步从头越。与时俱进的我们将勇立市场经济发展潮头，心怀国之大者，践行使命担当，守正创新，行稳致远，努力实现创新发展、共享发展、可持续发展。

用情结水缘，用心筑品牌。我们真诚与新老朋友共享发展机遇，共创美好未来！

Carrying honor and dream, bearing responsibility and undertaking, Sichuan Water Development Construction Co., Ltd., which was born in 1963, has gone through 60 years of trials and hardships. Over the past 60 years, we have worked together in a brilliant way.

As Heaven keeps vigor through movement, a gentleman should unremittingly practice self-improvement, and we are always cautious and self-motivated; The momentum of the earth is generous and gentle. A gentleman should enrich his virtue and contain all things. We never change our original intention. The scene of the water conservancy people working hard is fixed between green mountains and green waters, and the spirit of pursuing excellence is concentrated in the history of great undertakings, which will never disappear.

The strong pass of the enemy is like a wall of iron, yet with firm strides, we are conquering its summit. As we keep pace with the times, we will bravely stand at the forefront of the development of the market economy, embrace the country's greatest interests, fulfill our mission, uphold innovation, achieve stability and reach a long-term goal, and strive to achieve innovative, shared and sustainable development.

To tie the knot with water, to build a brand with our heart and love. We sincerely share development opportunities with new and old friends to create a better future!

ENTERPRISE CULTURE

企业文化

ENTERPRISE SPIRIT 企业精神

内敛坚韧
Introverted and tough

勇毅笃行
Brave and resolute

CORE VALUE 核心价值观

忠诚
Loyalty

创新
Innovation

卓越
Excellence

共享
Sharing

ENTERPRISE CULTURE 企业文化

爱岗敬业
Dedicated to work

低调做人
Keep a low profile

潜心做事
Devote oneself to doing things

争创一流
Strive for first-class

MANAGEMENT CONCEPT 管理理念

科学规范
Scientific norms

集约高效
Intensive and high efficiency

BUSINESS PHILOSOPHY 经营理念

履约守信
Abide by the agreement and keep promise

融合发展
Integrated development

C 目录 CONTENTS

1

Chapter I

创行水利·山河存功业 / Create water conservancy and save achievements in mountains and rivers

公司简介 / Company Profile	06-07 PAGE
发展历程 / Development History	08-09 PAGE
组织架构 / Organizational structure	10-11 PAGE
领导关怀 / Leadership concern	12-13 PAGE
领导题词 / Inscription of the leaders	14 PAGE

2

Chapter II

科学匠筑·品质出精工 / Scientific Craftsmanship · Quality Produces Exquisite Craftsmanship

资质荣誉 / Qualifications and honors	16-17 PAGE
市场网络 / Market network	18-19 PAGE
精品工程 / Excellent project	20-64 PAGE

3

Chapter III

忠诚尽责·担当践初心 / Loyalty and responsibility - take responsibility to practice the original intention

社会责任 / Social responsibility	66-69 PAGE
党建引领 / Party Building Guidance	70-72 PAGE
员工天地 / Staff world	73-74 PAGE

4

Chapter IV

求实创新·聚力谱新篇 / Pragmatic innovation · Gathering strength for a new chapter

未来展望 / Future Prospects	76 PAGE
-------------------------	---------

创行水利·山河存功业

CREATE WATER CONSERVANCY AND SAVE ACHIEVEMENTS IN MOUNTAINS AND RIVERS

天府之国, 延续千年不老传奇

江河之源, 孕育川蜀万千百态

水利建设

这场声势浩大的生命工程

已随时代的脉搏, 跳动六十余年

描绘出一幅波澜壮阔的水利画卷

守护着一方百姓安康

The Land of Abundance, a legend lasting for thousands of years

The source of rivers breeds thousands of states in Sichuan

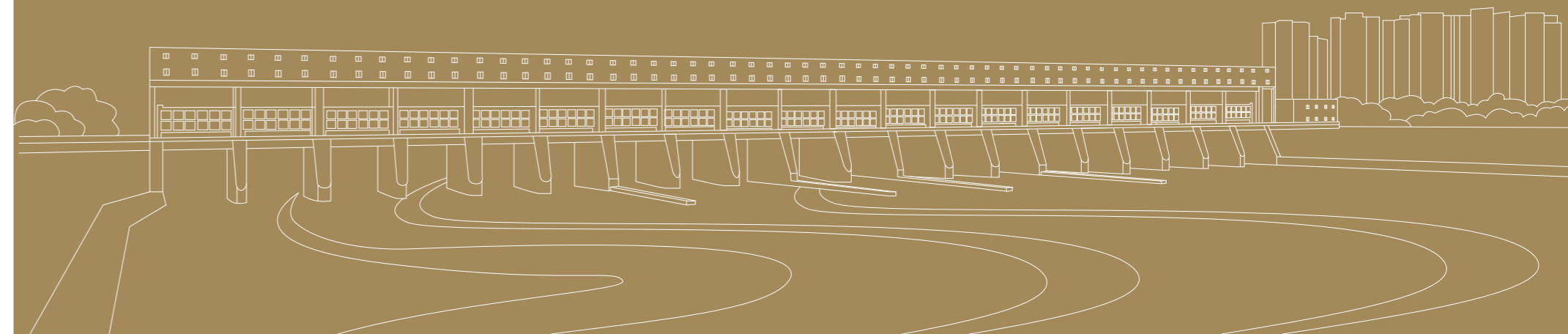
Water conservancy construction

The massive life project

It has been beating with the pulse of the times for more than 60 years

Draw a magnificent picture of water conservancy

Guarding the well-being of the people



COMPANY PROFILE

公司简介

四川水发建设有限公司是四川省水利发展集团有限公司的核心子公司，具有国家水利水电工程施工总承包壹级资质，前身为成立于1963年4月的四川省水利电力厅水利工程处。2020年5月，改制为四川省水利电力工程局有限公司，2022年9月，更名为四川水发建设有限公司，注册资本45032.25万元。

公司主要承担国内外大中型水利水电工程的土建、机电设备安装、金属结构制作和安装、地基处理以及房建、市政、交通工程的建设施工。60年来，先后承建国内外水利水电工程及其它建筑工程800余项，所建工程屡获国家及省部级奖项，具有良好的市场信誉。

公司始终坚持党建引领高质量发展，以先进的企业文化培育人，秉承“遵约守信、融合发展”的经营理念，愿与国内外同仁真诚合作，竭诚为国内外水利水电工程及其它建筑安装工程提供优质服务。

Sichuan Water Development Construction Co., Ltd., a core subsidiary of Sichuan Water Development Group Co., Ltd., has the first grade qualification for general contracting of national water conservancy and hydropower projects, formerly known as the Water Conservancy Engineering Division of Sichuan Provincial Department of Water Resources and Power, which was established in April 1963. In May 2020, it was restructured as Sichuan Water Conservancy and Power Engineering Bureau Co., Ltd., and in September 2022, it was renamed as Sichuan Water Development Construction Co., Ltd. with a registered capital of RMB 450.3225 million.

The company is mainly responsible for civil engineering, mechanical and electrical equipment installation, metal structure fabrication and installation, foundation treatment, and construction of housing, municipal and traffic engineering of large and medium-sized water conservancy and hydropower projects at home and abroad. Over the past 60 years, it has undertaken more than 800 water conservancy and hydropower projects and other construction projects at home and abroad. The projects it has built have won national, provincial and ministerial awards, and have good market reputation.

The company always insists on using party building to lead high-quality development, cultivating people with advanced enterprise culture, adhering to the business philosophy of "Compliance & Trustworthiness, Integration & Development", willing to sincerely cooperate with domestic and foreign counterparts and wholeheartedly provide quality services for domestic and foreign water conservancy and hydropower projects and other construction and installation projects.



1963年4月

成立时间
Date of establishment



DEVELOPMENT HISTORY

发展历程

忆往昔,大半个世纪的创业奋斗历程,汇成一幅幅动人的画面,凝望那些充满意义的流金岁月,水利人谱写出一曲曲动人的赞歌。

Looking back on the past, more than half a century of entrepreneurial struggle has gathered into moving pictures. Looking at those meaningful golden years, the water conservancy workers have written moving hymns.

60年代

1963年4月,四川省水利电力厅水利工程处宣告成立。怀揣着光荣与梦想,老一辈水利人卧薪尝胆,艰苦创业,在肩挑背磨中展现工作的崇高,在穷乡僻壤中体味生活的甘苦,艰苦、清苦、辛苦,这是对他们一生最真实的写照!

In April 1963, Water Conservancy Works Department of Sichuan Provincial Water Resources and Electric Power Department was established. With honor and dreams, the older generation of water conservancy people have endured hardships and worked hard to show the loftiness of their work in shoulder to shoulder grinding, and experienced the joys and hardships of life in the backcountry. This is the most true portrayal of their life!

70年代

1979年12月,水利工程处扩建为四川省水利建设工程公司。水利建设者挥洒着青春与热血甚至生命,在构绘治水蓝图上,诠释着追求与向往,简阳三岔水库、玉溪河引水工程、都江堰外江闸一系列工程,成为实现人生价值的主战场!

In December 1979, the Water Conservancy Works Department of Sichuan Provincial Water Resources and Electric Power Department was expanded to Sichuan Water Conservancy Construction Engineering Company. The water conservancy constructors are full of youth, blood and even life. They express their pursuit and yearning in drawing the blueprint for water control. Jianyang Sancha Reservoir, Yuxi River Diversion Project, Dujiangyan Waijiang Sluice and a series of projects have become the main battlefield to realize the value of life!

80年代

改革开放和经济的持续发展,对水利事业提出了新的任务和更高要求,默默付出的水利建设者,年复一年,在寒风刺骨中,在炎炎烈日下,坚守、奉献!南充升钟水库这一代表工程,成为水利人的骄傲!

Reform and opening up and the continuous development of the economy have put forward new tasks and higher requirements for the water conservancy industry. Year after year, in the cold wind and under the scorching sun, the construction of water conservancy has made great efforts. Nanchong Shengzhong Reservoir, this representative project, becomes the pride of water conservancy people!

新世纪

跨入新世纪,迈步新征程。2020年5月,四川省水利电力工程局改制为四川省水利电力工程局有限公司;2022年9月,公司更名为四川水发建设有限公司。在市场经济浪潮的搏击中,水利建设者南征北战、走向国际、再展雄风,承建绵阳三江电站、甘肃九龙峡电站、江西龙头山电站、岷江虎渡溪电站、亭子口灌区一期工程、龙塘水库、缅甸勐瓦水电站、老挝色萨拉龙灌溉工程、厄瓜多尔TP项目等国内外水利水电工程,激励着水利建设者勇毅前行,向新时代更高更新目标攀登!

Step into a new century and step into a new era. In May 2020, Sichuan Water Conservancy and Electric Power Engineering Bureau was restructured into Sichuan Water Conservancy and Electric Power Engineering Bureau Co., Ltd. In September 2022, renamed as Sichuan Water Development Construction Co., Ltd. In the battle of the market economy tide, water conservancy constructors fought from south to north, went international and showed their mettle again. They contracted to build Mianyang Sanjiang Hydropower Station, Gansu Jiulongxia Hydropower Station, Jiangxi Longtoushan Hydropower Station, Minjiang Huduxi Hydropower Station, Tingzikou Irrigation Area Phase 1 Project, Longtang Reservoir, Myanmar Mengwa Hydropower Station, Laos Sesaran Irrigation Project, Ecuador TP Project and other domestic and international water conservancy and hydropower projects, which encouraged water conservancy constructors to march forward bravely, climb to a higher goal of updating in the new era!

90年代

1991年7月,四川省水利建设工程公司更名为四川省水利电力工程局。国家对农业的高度重视,为水利事业注入新的活力。绵阳武引工程、高县来复电站、洪雅城东电站、重庆宋农电站等工程的施工现场,水利人夜以继日,忘我工作,为水利事业的进一步发展续写着新的辉煌!

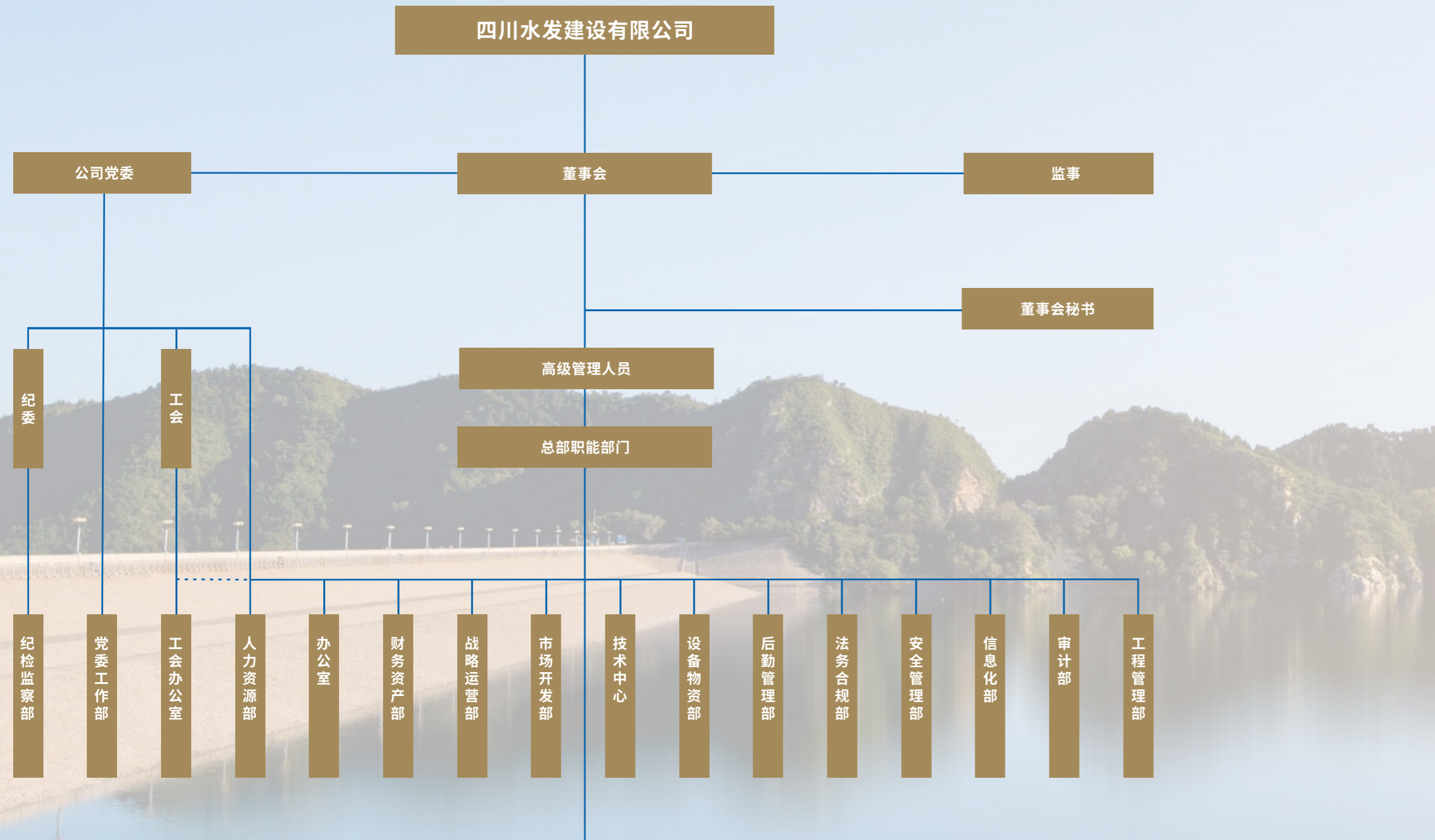
In July 1991, Sichuan Water Conservancy Construction Engineering Company was renamed Sichuan Water Conservancy And Electric Engineering Bureau. The country attached great importance to agriculture and injects new vitality into water conservancy undertakings. At the construction sites of Mianyang Wuyin project, Gaoxian Laifu Power Station, Hongya Chengdong Power Station, Chongqing Songnong Power Station And Other Projects, water conservancy personnel worked day and night, selflessly, and continued to write new splendor for the further development of water conservancy industry.

ORGANIZATIONAL STRUCTURE

组织架构

公司致力于建立高效统一的运作组合，整合资源、优化配置，确定集团职能模块，构建起一套坚强有力、系统完善、与时俱进的组织体系，为企业的快速高质量发展提供了根本保证。

The company is committed to establishing an efficient and unified operation portfolio, integrating resources, optimizing allocation, determining functional modules of the group, and building a strong, systematic and advancing organizational system, which provides a fundamental guarantee for the rapid and high-quality development of the enterprise.



LEADERSHIP CONCERN

领导关怀

关怀，是方向，是动力。多年来，公司的成就不仅来自于企业员工的奋力拼搏，也凝聚着社会各界的广泛关注和深切厚爱。各级党委政府领导高度重视公司发展，多次莅临指导工作，给企业发展增添了动力，指明了方向。

Care, is the direction, is the power. Over the years, the achievements of the company not only come from the hard work of the employees, but also the broad concern and deep love of the community. Party committees and government leaders at all levels attach great importance to the development of the company, many times to guide the work, to the development of the enterprise added power, point out the direction.

01	02
	03
	04

- 01/ 江泽民视察紫坪铺
Jiang Zemin Inspected Zipingpu
- 02/ 原四川省省长鲁大东（中）视察升钟水库工程
Lu Dadong (middle), former governor of Sichuan Province, inspected Shengzhong Reservoir Project
- 03/ 原水利部杨振怀部长视察升钟水库工程
Yang Zhenhua, former Minister of the Ministry of Water Resources, inspected Shengzhong Reservoir Project
- 04/ 原水利部副部长严克强、原副省长谢世杰视察绵阳武引工程
Yan Keqiang, the former Vice Minister of the Ministry of Water Resources, and Xie Shijie, the former Vice Governor of the province, visited Mianyang Wuyin Water Diversion Project



01	02	05
		06
03	04	07

- 01/ 温家宝总理在映秀
Premier Wen Jiabao in Yingxiu
- 02/ 全国政协副主席杨汝岱在绵阳市三江水电站启动闸门
Yang Ruda, Vice Chairman of the CPPCC National Committee, started the gate of Sanjiang Hydropower Station in Mianyang City
- 03/ 原省委副书记、省长张中伟，省委副书记杨崇汇视察武引工地
Zhang Zhongwei, former deputy secretary of the provincial party committee and governor, and Yang Chonghui, deputy secretary of the provincial party committee inspected the Wuyin construction site
- 04/ 四川省副省长胡云（时任水利厅副厅长）视察清平泥石流抢险
Hu Yun, Vice Governor of Sichuan Province (then Deputy Director of the Department of Water Resources), inspected the debris flow rescue in Qingping
- 05/ 原国务院副总理田纪云视察武引工程
Tian Jiyun, former Vice Premier of the State Council, inspected the Wuyuan Project
- 06/ 原四川省委书记张学忠视察雅安大兴电站工程
Zhang Xuezhong, former secretary of Sichuan Provincial Party Committee, inspected Ya'an Daxing Hydropower Station Project
- 07/ 四川水发集团党委书记、董事长钟杰视察岷江虎渡溪水电站工程
Zhong Jie, Secretary of the Party Committee and Chairman of Sichuan Waterpower Development Group, inspected the Huduxi Hydropower Station Project on the Minjiang River



INSCRIPTION OF THE LEADERS

领导题词



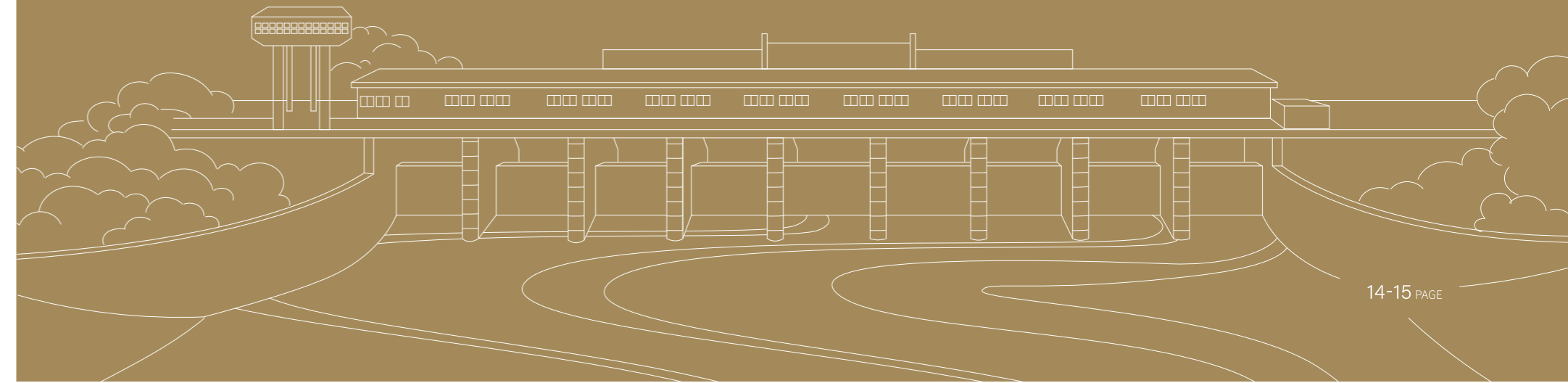
- | | | | | | |
|----|----|----|---|--|---|
| 01 | 02 | 04 | ● 01 / 周恩来总理为重庆狮子滩水电站工程题词
Premier Zhou Enlai inscribed for Chongqing Shizitan Hydropower Station Project | ● 04 / 原水利部部长杨振怀为我局武引工程题词
Yang Zhenhuai, former Minister of the Ministry of Water Resources, wrote an inscription for our Bureau's Wuyin Project | |
| | | 03 | 05 | ● 02 / 原中共中央政治局常委、总书记胡耀邦为升钟水库题写的库名
Hu Yaobang, former member of the Standing Committee and General Secretary of the Political Bureau of the CPC Central Committee, wrote the name of the reservoir for Shengzhong Reservoir | ● 05 / 原中央政治局委员 国务院副总理田纪云为武都引水工程题写的工程名
Tian Jiyun, former member of the Political Bureau of the Central Committee and Vice Premier of the State Council, wrote the project name for Wudu Water Diversion Project |
| | | | | ● 03 / 原水利部部长钱正英为我局成立三十周年题词
Qian Zhengying, former Minister of Water Resources, made an inscription for the 30th anniversary of the establishment of the Bureau | |
| | | | | | |
| | | | | | |

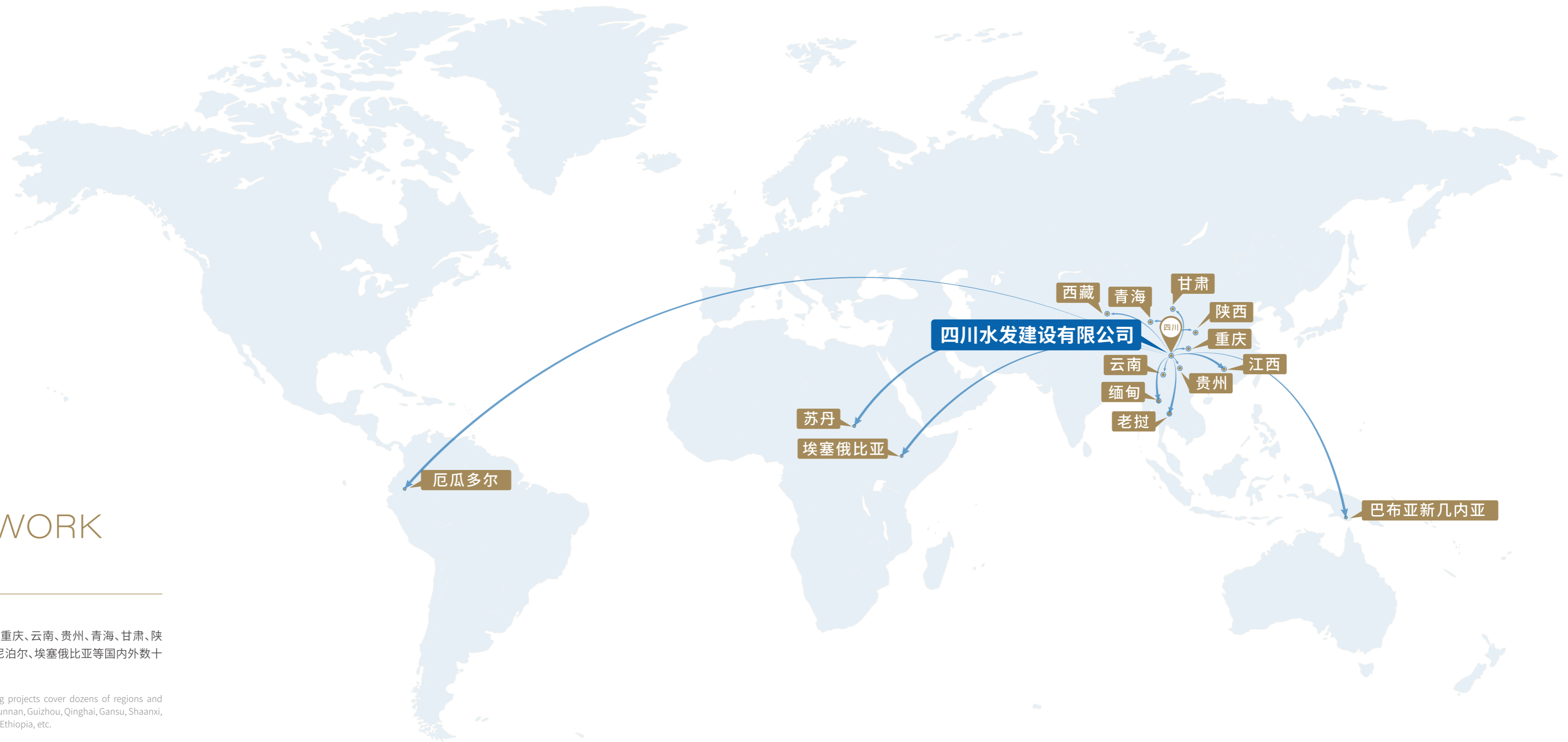
科学匠筑·品质出精工

SCIENTIFIC CRAFTSMANSHIP · QUALITY PRODUCES EXQUISITE CRAFTSMANSHIP

心怀诚挚，勇攀水利事业高峰
慎思笃行，追求工程卓越质量
奖杯和荣誉
是前行路上绚丽的注脚
激励着我们在高点保持奋战姿态
不负期待，追寻下一个顶峰的骄傲
呈现更好的成果

Be sincere and brave to climb the peak of water conservancy
Deliberate in thinking and practicing, pursuing excellent project quality
Trophies and Honors
Are beautiful footnotes on the road ahead
Inspire us to keep fighting attitude at the high point
Live up to expectations and pursue the pride of the next peak
Show better results





MARKET NETWORK 市场网络

经过60年辛勤耕耘，公司工程项目覆盖四川、重庆、云南、贵州、青海、甘肃、陕西、江西、西藏、新疆、厄瓜多尔、缅甸、老挝、苏丹、尼泊尔、埃塞俄比亚等国内外数十个地区和国家的。

After 60 years of hard work, the company's engineering projects cover dozens of regions and countries at home and abroad, including Sichuan, Chongqing, Yunnan, Guizhou, Qinghai, Gansu, Shaanxi, Jiangxi, Tibet, Xinjiang, Ecuador, Myanmar, Laos, Sudan, Nepal, Ethiopia, etc.

EXCELLENT PROJECT

精品工程

大坝工程 / Dam Project

升钟水库大坝工程

Shengzhong Reservoir Dam project

大坝设计为粘土心墙石渣坝，最大坝高79米，总库容13.39亿立方米。大坝基础灌浆获四川省优秀施工一等奖。

The dam is designed as a clay-core slag dam with a maximum height of 79 meters and a total storage capacity of 1.339 billion cubic meters. Dam foundation grouting won the first prize of Excellent construction in Sichuan Province.





仁寿黑龙滩水库大坝
Renshou Heilongtan Reservoir dam

简阳三岔湖水库大坝

Jiayang Sancha Lake Reservoir Dam

三岔水库位于四川省简阳市三岔镇建国乡沱江支流绛溪河上游，系东风渠第六期工程大型围蓄水工程，总库容2.29亿 m^3 。大坝为粘土斜墙石渣坝。公司先后承担了大坝、放空洞、高低放水洞和南干渠上的降溪河、官河堰、肖公河等六座渡槽及老鹰岩倒洪管等主体工程项目建设。1987年该工程荣获水利电力部优质工程奖。

Sancha Reservoir is located in the upstream of Jiangxi River, tributary of Tuojiang River, Jianguo Township, Sancha Town, Jiayang City, Sichuan Province. It is a large-scale storage reservoir of the sixth phase of Dongfengqu Project, with a total storage capacity of 229 million m^3 . The dam is a clay inclined wall stone slag dam. The company has undertaken the main engineering projects such as dam, drainage hole, high and low drainage tunnel, six aqueducts such as Jiangxi River, Guanhe weir and Xiaogong River on the Nanguan Canal and Yingyanyan inverted flood pipe. In 1987, the project won the Ministry of Water Resources and Power Quality project award.





纳溪区黄桷坝水库工程

Huangjueba Reservoir Project in Naxi District

工程包括混凝土面板堆石坝、泄洪防空洞、开敞式溢洪道和引水隧洞等建筑物。

The project includes concrete face rockfill dam, spillway shelter, open spillway and diversion tunnel and other buildings.



安岳关刀桥水库枢纽工程

Anyue Guandaoqiao Reservoir Hub Project

工程包括风化泥岩心墙石渣坝、开敞式溢洪道、取水洞和放空洞等建筑物。

The project includes weathered mudstone core wall ballast dam, open spillway, water intake tunnel, emptying tunnel and other buildings.



巴州区天星桥水库工程

Bazhou District Tianxingqiao Reservoir Project

巴州区天星桥水库工程,包括沥青混凝土心墙石渣坝、溢洪道、放空隧洞、取水隧洞、吴家河补水工程等建筑物。

Bazhou District Tianxingqiao Reservoir Project, Including Asphalt Concrete Core Wall Stone Slag Dam, Spillway, Drain Tunnel, Water Intake Tunnel, Wujiahe Water Replenishment Project And Other Buildings.



金堂县沱江盘龙寺拦河闸工程

Jintang County Tuojiang River Panlong Temple dam project

工程等级定为 I 等大 (1) 型工程, 包括拦河闸坝、闸坝左岸防洪堤、右岸护岸和河道疏浚工程。

The project is classified as I and so on big (1) type project, including barrage gate, left bank flood barrier, right bank revetment and river dredging project.





宜宾县蟠龙湖水库工程
Panlong Lake Reservoir project in Yibin County

工程包括沥青混凝土心墙石渣坝、导流隧洞、溢洪道、放空隧洞、上坝公路等建筑物。

The project includes asphalt concrete core slag dam, diversion tunnel, spillway, cavitation tunnel, dam road and other buildings.



绵阳燕儿河水库工程
Mianyang Yaner River Reservoir Project

工程位于绵阳市涪城区吴家镇境内，水库枢纽主要建筑物由大坝、溢洪道、右灌溉放水洞、导流放空洞和城镇供水洞等组成，大坝为风化泥岩心墙石渣坝。

The project is located in Wujia Town, Fucheng District, Mianyang City. The main structures of the reservoir complex are composed of the dam, spillway, right irrigation drainage tunnel, diversion drainage tunnel and urban water supply tunnel. The dam is a ballast dam with weathered mudstone core.



九龙峡水电站大坝工程
Jiulongxia Hydropower Station dam project

工程为引水式电站，主要由拦河大坝、泄水建筑物、进水口、压力引水洞、调压井、压力钢管、发电厂房、开关站等建筑物组成。

The project is a diversion type power station, mainly composed of river dam, water release structure, water inlet, pressure diversion tunnel, surge shaft, penstock, power house, switch station and other buildings.

EXCELLENT PROJECT

精品工程

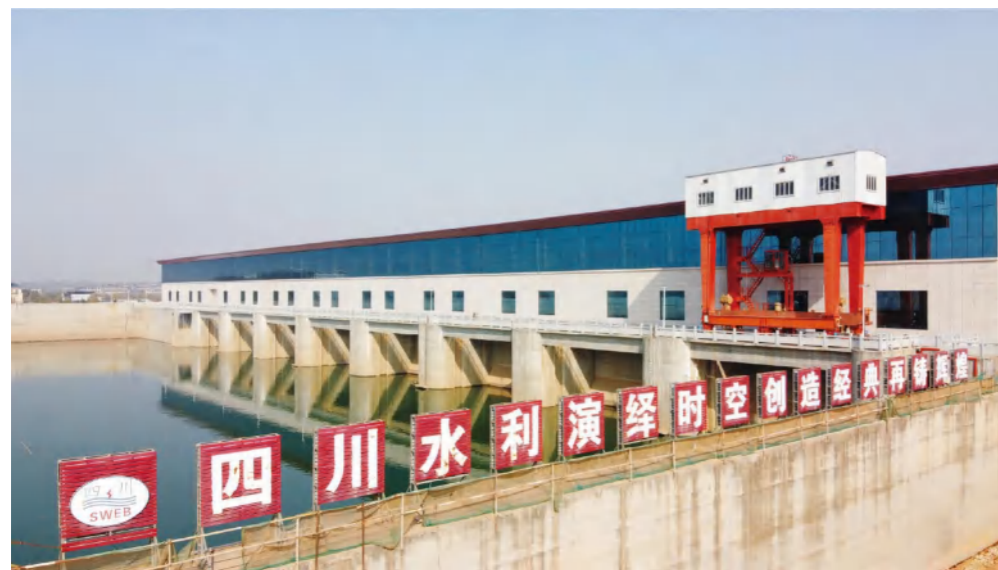
水电站工程 / Hydropower Station Project

江西龙头山水电站工程

Jiangxi Longtoushan Hydropower Station Project

工程位于江西丰城市境内赣江主河道上，为河床式电站，总装机容量为240MW (8×30MW)，航道等级III级。由拦河坝、发电厂房、船闸等建筑物构成。

The project is located on the main river course of Ganjiang River in Fengcheng City, Jiangxi Province. It is a river bed power station with a total installed capacity of 240MW (8×30MW), and the channel is classified as Class III. It is composed of barrage, power house, ship lock and other buildings.





虎渡溪水电站工程

Huduxi Water Power Station Project

工程为岷江干流(彭山江口至乐山岷江三桥段)航电梯级规划开发中的第六级,河床式电站,由左岸防洪堤、鱼道、左岸防洪堤接头段、发电厂房、泄水建筑物、船闸、右岸防洪堤、河道疏浚等组成。

The project is the sixth stage in the planning and development of the navigation elevator in the main stream of Minjiang River (Pengshan Jiangkou Leshan Minjiang River Third Bridge Section). The river bed type power station is composed of the left bank flood dike, fishway, left bank flood dike joint section, power house, water release structures, ship lock, right bank flood dike, river dredging, etc.



绵阳三江水电综合工程

Mianyang Sanjiang Hydropower Complex Project

主要由装机 3×1.5 kw河床式电站、三江公路大桥和左右岸12.35km的城市防洪堤及李家脊维护工程组成。

It mainly consists of $3 \times 15,000$ kw block power plant, Sanjiang Highway Bridge and 12.35km of urban levees on the left and right banks and Lijiaji maintenance engineering.

大唐雅安大兴水电站工程

Datang Ya'an Daxing Hydropower Project

大唐雅安大兴水电站为河床式电站，总装机 3×2.7 万KW，主要由主副厂房、升压站、尾水渠、冲沙闸、泄洪闸、非溢流坝及左岸副坝、右岸防洪堤等建筑物组成。

Datang Ya'an Daxing Hydropower Station is a block power plant with a total installed capacity of $3 \times 27,000$ KW. It mainly consists of main and secondary plants, booster station, tail water channel, scouring sluice, sluice, non-over-flow dam, left bank secondary dam, right bank levee and other buildings.



重庆富金坝梯级电站枢纽工程

Chongqing Fujinba Cascade Power Station Hub Project





横江流域水电站工程

Hengjiang River Basin Hydropower Project

横江流域梯级水电开发已建电站均由公司承建，分别为张窝、撒鱼沱、大鱼孔、杨柳滩、万年桥、燕子坡共6座水电站，总装机容量达32.6万KW。

The built hydropower stations for the cascade hydropower development in the Hengjiang River basin are all constructed by the company, including Zhangwo, Sayutuo, Dayukong, Yangliutan, Wannianqiao and Yanzipo, with a total installed capacity of 326,000 KW.

01	04	
02	05	06
03		

- 01 / 张窝电站
Zhangwo Hydropower Station
- 02 / 大鱼孔电站
Dayukong Hydropower Station
- 03 / 杨柳滩电站
Yangliutan Hydropower Station
- 04 / 燕子坡电站
Yanzipo Hydropower Station
- 05 / 万年桥电站
Wannianqiao Hydropower Station
- 06 / 撒鱼沱电站
Sayutuo Hydropower Station



水洛河流域水电站工程

Shuiluo River Basin Hydropower Project

水洛河流域由中国华电集团进行梯级水电开发，公司先后在水洛河流域承建固滴水电站首部枢纽工程、水洛河新藏水电站引水隧洞(隧13+300~隧18+093)工程、博瓦水电站首部枢纽工程、水洛河固滴至利民通乡通村公路工程钻根隧洞及木尔格桥工程等多个项目。

The Shuiluo River basin is developed by China Huadian Corporation for cascade hydropower. The company has successively undertaken several projects in the Shuiluo River basin, such as the Head Works Project of Gudi Hydropower Station, the Diversion Tunnel (tunnel 13+300 - tunnel 18+093) Project of Xinzang Hydropower Station on the Shuiluo River, the Head Works Project of Bowa Hydropower Station, the Drilling Tunnel and Muerge Bridge Project of the Highway Engineering connecting the townships and villages from Gudi to Limin of Shuiluo River.



青羊沟水电站工程

Qingyanggou Hydropower Project

青羊沟水电站枢纽混凝土重力坝主要由三孔溢流表孔坝段、一孔泄洪冲砂中孔坝段、电站进水口坝段和挡水坝段等主要建筑物组成。

The concrete gravity dam at the hub of the Qingyanggou Hydropower Station is mainly composed of three holes of overflow surface outlet dam section, one hole of flood relief sand flushing mid-level outlet dam section, power station inlet dam section and water retaining dam section and other major buildings.

洞松水电站工程

Dongsong Hydropower Project

大唐集团洞松水电站首部枢纽、引水隧洞 S3+000 以前段土建及金属结构安装工程，电站为引水式电站，由拦河闸坝、引水建筑物、厂区建筑物等组成。

The civil construction and metal structure installation project of the head works of the Dong Song Hydropower Station of China Datang Corporation and the previous section of the diversion tunnel S3+000, the power station is the diversion-type hydropower station, which consists of barrage dams, diversion buildings, plant buildings, etc.

- 01 / 博瓦水电站工程
Bowa Hydropower Project
- 02 / 新藏水电站引水隧洞工程
Diversion Tunnel Project of Xinzang Hydropower Station
- 03 / 固滴水电站工程
Gudi Hydropower Project

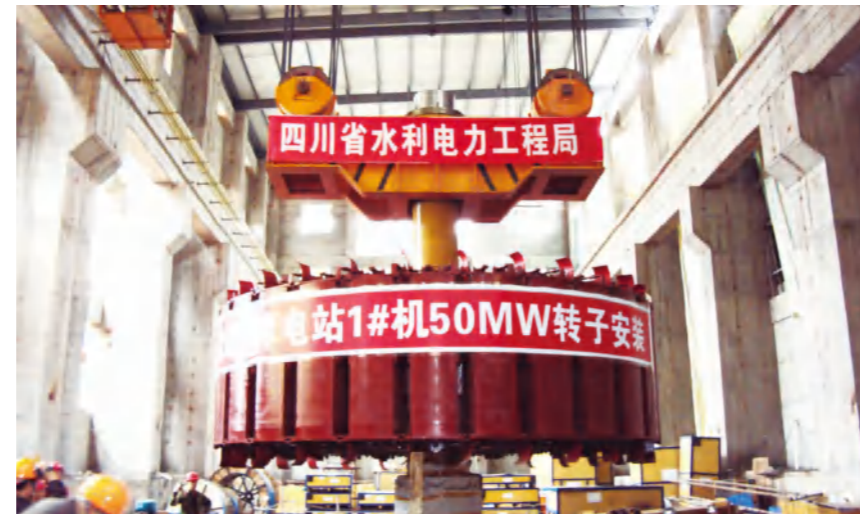


武都电站厂房工程

Wudu Power Station Plant Project

武都水电站厂房工程为坝后式电站，总装机 3×5.0 万kw。

Wudu hydropower station plant project is a post-dam type power station with a total installed capacity of $3 \times 50,000$ kw.



沙湾电站尾水渠工程

Shawan Power Station Tail Water Channel Project

承建的当时亚洲最大尾水渠工程。

Construction of the largest tail water channel project in Asia at that time.



瓦屋山水电站厂房工程

Mount Wawu Hydropower Station Plant Project

洪雅县瓦屋山水电站是周公河干流七级开发的第一级，也是龙头水库电站，电站机组额定流量 $117.86\text{m}^3/\text{s}$ ，设计水头230m，装机容量 2×13 万kw。

Hongya County Mount Wawu Hydropower Station is the first stage of the seven-stage development of the main stream of the Zhougong River, and it is also the power station of Longtou Reservoir, with a rated flow rate of $117.86\text{m}^3/\text{s}$, a design head of 230m and an installed capacity of $2 \times 130,000$ kw.



EXCELLENT PROJECT

精品工程

引调水工程 / Water Diversion Project

绵阳武都引水一期工程

Mianyang Wudu Water Diversion Phase I Project

武都引水工程被邓小平同志誉为“第二个都江堰”，是兼防洪、发电、供水等综合利用的大型水利骨干工程。公司先后承担取水枢纽（闸坝）、总干渠和石龙嘴水电站的施工。

Wudu water diversion project was hailed as "the second Dujiangyan" by Comrade Deng Xiaoping, and is a large-scale water conservancy backbone project with comprehensive use of flood control, power generation and water supply. The company has undertaken the construction of the water intake tunnel (gate dam), the main trunk canal and the Shilongzui hydropower station.





武都引水第二期五标段

Wudong Water Diversion Phase II Section V

武都引水第二期灌区工程西梓干渠第五标渠道总长8300m,由隧洞、渡槽、倒虹管、明渠、节制闸、泄水闸、分水闸等组成。

The section V channel of the Xizi trunk canal of the Wudu water diversion phase II irrigation area project has a total length of 8,300m, consisting of tunnels, aqueducts, inverted siphons, open channels, sluices, drainage gates and turn-out gates.



雅安铜头引水工程

Ya'an Tongtou Water Diversion Project

铜头引水工程干渠施工I标段为引水灌溉、供水工程,设计流量 $5.2\text{m}^3/\text{s}$,含明渠、暗渠、隧洞、渡槽、倒虹管等建筑物。

Section I of Tongtou water diversion project trunk canal construction is a diversion irrigation and water supply project with a design flow of $5.2\text{m}^3/\text{s}$, including open channels, culverts, tunnels, aqueducts, inverted siphons and other buildings.



绵阳武引梨儿园渡槽

Mianyang Wuyin Lieryuan Aqueduct



都江堰灌区毗河供水一期工程第五分部

The fifth part of Pihe River Water Supply Phase I Project in Dujiangyan Irrigation Area

都江堰灌区毗河供水一期工程第五分部工程位于资阳市雁江区-乐至县境内,主要工程项目由乐阳干渠、裕通分干渠、中和支渠、鲤鱼充水渠组成。

The fifth part of Pihe River Water Supply Phase I Project in Dujiangyan Irrigation Area is located in Lezhi County, Yanjiang District, Ziyang City. The main project consists of Leyang trunk canal, Yutong sub-main canal, Zhonghe branch canal and carp filling canal.



自贡市小井沟水利工程输水干渠

Zigong City Xiaojinggou Water Conservancy Project Water Transmission Trunk Canal

自贡市小井沟水利工程输水干渠(应急)工程III标段由明渠、渡槽、暗渠、隧洞等组成。

Zigong City Xiaojinggou Water Conservancy Project Water Transmission Trunk Canal (Emergency) Project Section III consists of open channels, aqueducts, culverts, tunnels, etc.

四川省通济堰灌区续建配套与节水改造渠首取水改造工程获中国水利优质工程“大禹奖”

Tongjiyan Irrigation Area in Sichuan Province continued construction of supporting facilities and water-saving transformation, canal head water intake transformation project won the "Dayu Award" of China Water Conservancy Quality Project



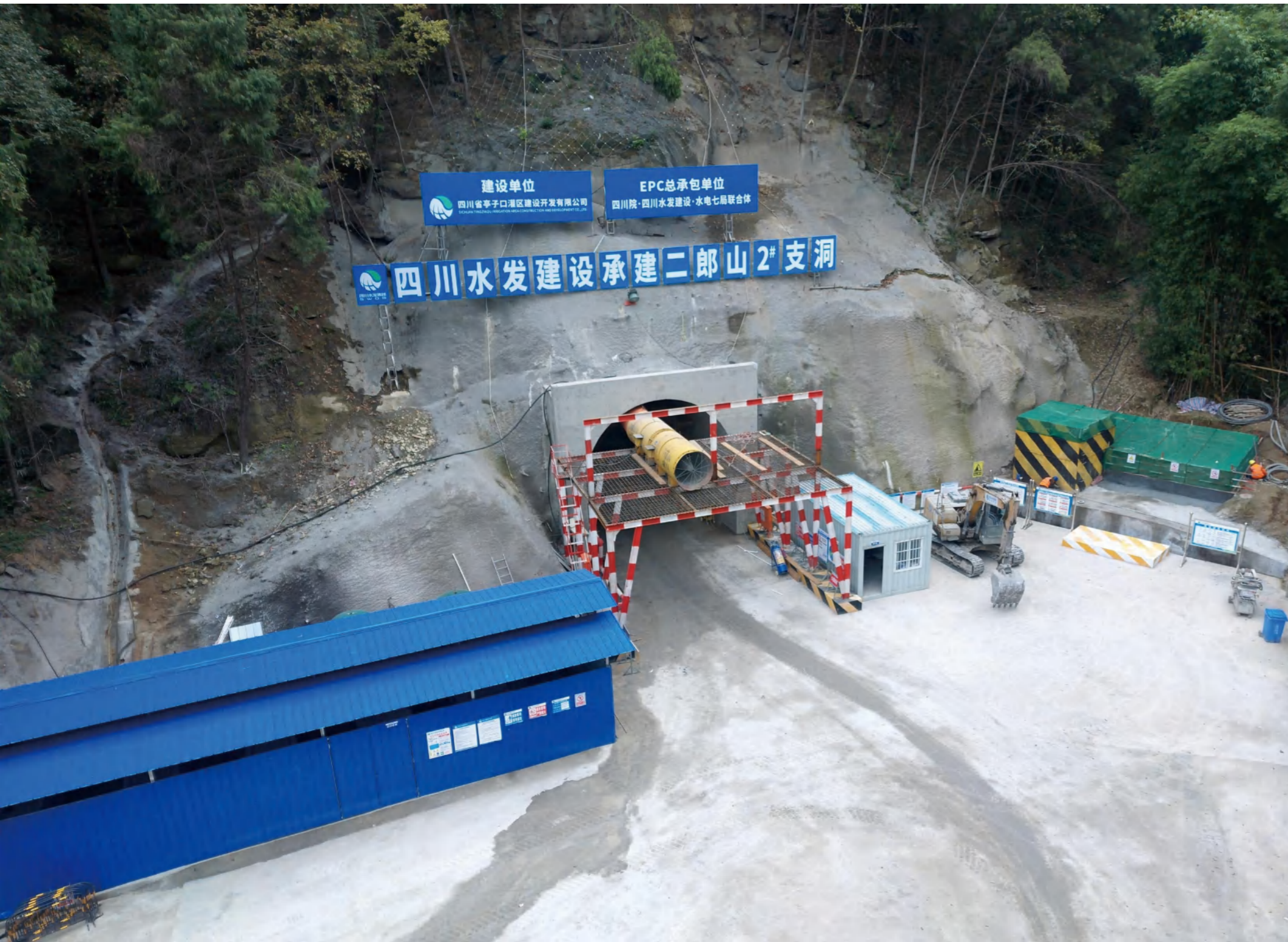
广安凉滩水电站工程

Guang'an Liangtan Hydropower Project

工程位于广安市广兴镇,装机容量 $2 \times 10 \text{ MW}$,设计引用流量 $320 \text{ m}^3/\text{s}$,公司主要承担引水明渠(含上游深水围堰)、前池、主厂房、尾水渠和下游围堰施工。

The project is located in Guangxing Town, Guang'an City, with an installed capacity of $2 \times 10 \text{ MW}$ and a design citation flow of $320 \text{ m}^3/\text{s}$. The company mainly undertakes the construction of the diversion open channels (including the upstream deep-water cofferdam), the forebay, the main plant, the tail water channels and the downstream cofferdam.





亭子口灌区一期工程

Tingzikou Irrigation Area Phase I Project

亭子口灌区工程是国务院172项节水供水重大水利工程,是四川省水资源配置总体布局“五横六纵”中的骨干工程。亭子口灌区一期工程为I等大(一)型工程,涉及广元、南充、广安和达州4市11县(市、区),设计灌溉面积135.94万亩,供水人口245万人。

Tingzikou Irrigation Area Project is one of the 172 major water conservation and water supply projects of the State Council, and is the backbone project of "five horizontal and six vertical" in the overall layout of water resources allocation in Sichuan Province. Tingzikou Irrigation Area Phase I Project is a Class I large (1) project, involving 11 counties (cities and districts) in Guangyuan, Nanchong, Guang'an and Dazhou. The designed irrigation area is 1.3594 million mu, and the water supply population is 2.45 million.



盐源县龙塘水库及灌区工程

Longtang Reservoir and Irrigation Area Project in Yanyuan County

本工程为国务院172项节水供水重大水利工程，II等大(2)型，由水库工程和灌区工程两大部分组成。水库总库容1.46亿 m^3 ，兴利库容1.12亿 m^3 ，主坝为混凝土重力坝，坝后电站总装机容量7.6MW，规划灌溉面积36.2万亩。

This project is one of the 172 major water conservation and water supply projects of the State Council, a Class II large (2) project, consisting of two major parts: reservoir project and irrigation area project. The total reservoir capacity is 146 million m^3 , the Xingli reservoir capacity is 112 million m^3 , the main dam is a concrete gravity dam, the total installed capacity of the post-dam power station is 7.6 MW, and the planned irrigation area is 362,000 mu.



EXCELLENT PROJECT

精品工程

公路工程 / Highway Engineering

达渝高速公路(大竹段)
Dayu Expressway (Dazhu Section)



紫坪铺水利枢纽左岸主干道公路
Main Road on the Left Bank of Zipingpu Key Water Control Project

紫坪铺水利枢纽左岸场内主干道公路A合同段工程为山区重载公路,公路等级为山岭重丘三级,混凝土路面,有长83m净跨60m桥梁一座。

The contract section of the main road A on the left bank of Zipingpu key water control project is a mountainous heavy-duty highway, with Grade III in mountainous hilly area, concrete pavement, and a bridge of 83m long and 60m clear span.



01

02

01 / 绵阳三江公路大桥
Mianyang Sanjiang Highway Bridge

03 / 内宜高速公路
Neijiang-Yibin Expressway

03

04

02 / 108国道高速公路
108 National Expressway

04 / 云南昭鲁城市走廊公路
Yunnan Zhaolu Urban Corridor Highway

EXCELLENT PROJECT

精品工程

金属结构制作安装 / Fabrication and Installation of Metal Structure

01

01 / 金属结构生产车间
Metal structure production workshop

03

02 / 超大型弧形闸门安装
Installation of super large radial gate

02

03 / 机械厂厂貌
Machinery factory appearance



EXCELLENT PROJECT

精品工程

海外工程 / Overseas Project

厄瓜多尔TP水电站工程

Ecuador TP Hydropower Project

三峡集团中水对外厄瓜多尔TP水电站工程是一座引水式地下厂房发电站，由取水口、引水压力隧洞、压力交通洞、调压井、压力管道、地下厂房、尾水洞、尾调室、泄水洞、通风洞、电缆洞等建筑物组成。

Sinohydro External Ecuador TP Hydropower Project of China Three Gorges Corporation is a diversion type underground powerhouse power station, which is composed of water intake, diversion pressure tunnel, pressure traffic tunnel, surge shaft, pressure pipeline, underground powerhouse, tailrace tunnel, tailgate regulating chamber, drain cavern, ventilation tunnel, cable tunnel and other buildings.



老挝色萨拉龙灌溉项目

Sesalalong Irrigation Project in Laos

老挝色萨拉龙灌溉项目由土工膜心墙堆石坝、溢洪道、取水口、引水渠及渠系附属建筑物组成。工程的主要任务是灌溉农田并给灌区内人畜供水。

The Sesalalong Irrigation Project in Laos consists of geomembrane core wall rockfill dam, spillway, water intake, diversion canal and canal system appurtenant buildings. The main task of the project is to irrigate farmland and supply water to people and animals in the irrigation area.





缅甸南垒河勐瓦水电站工程

Myanmar Nanlei River Mengwa Hydropower Project

缅甸南垒河勐瓦水电站为河床式电站，是公司独立施工总承包国际项目，总装机容量60MW。由左岸非溢流坝段、电站进水口坝段、泄洪冲沙坝段、右岸非溢流坝段及发电厂房等建筑物组成。

Myanmar Nanlei River Mengwa Hydropower Station is a block power plant, which is an international project of the company's independent construction and general contracting, with a total installed capacity of 60 MW. It consists of the left bank non-overflow dam section, power station inlet dam section, flooding and sand flushing dam section, right bank non-overflow dam section and power plant house and other buildings.



巴布亚新几内亚水电站改扩建项目

Papua New Guinea Hydropower Station Reconstruction and Expansion Project

Rouna1水电站位于POM东北部20km处的Laloki河流域，装机为3台1.0MW卧轴冲击式水轮发电机组和1台2.5MW卧轴冲击式水轮发电机组；Sirinumu水电站位于巴新首都莫尔兹比港(POM)东北部35km处的Laloki河流上，Sirinumu水库主要为首都及周边居民供水，电站于50年代为合理利用水库的生态流量进行发电而建，装机为1台1.4MW立轴混流式水轮发电机组。两个电站的设施陈旧老化，公司承担升级改造工程。

The Rouna1 Hydropower Station is located at the side of the Laloki River 20km northeast of POM, with three 1.0 MW horizontal shaft impulse turbine generator units and one 2.5 MW horizontal shaft impulse turbine generator unit installed; Sirinumu Hydropower Station is located on the Laloki River 35km northeast of Port Moresby (POM), the capital of Papua New Guinea. The Sirinumu Reservoir mainly supplies water for the capital and its surrounding residents. The power station was built in the 1950s to make rational use of the ecological flow of the reservoir for power generation. The installed capacity is a 1.4 MW vertical shaft Francis turbine generator unit. The facilities of the two power stations are old and aging, and the company undertakes the upgrading project.



01

02

01 / 巴新罗纳1 (Rouna1) 电站
No.1 Rouna1 Hydropower Station in PNG

02 / 巴新锡林努姆 (Sirinumu) 电站
Sirinumu Hydropower Station in PNG

埃塞俄比亚BoLe-LeMi工业园项目行政楼

Administration Building of Ethiopia BoLe - LeMi Industrial Park Project

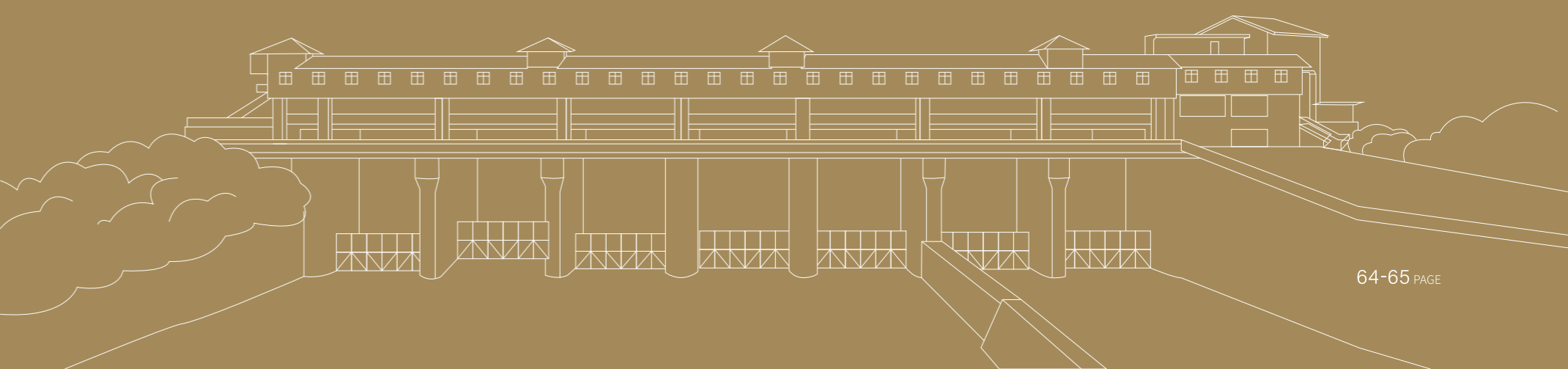


忠诚尽责·担当践初心

LOYALTY AND RESPONSIBILITY - TAKE RESPONSIBILITY TO PRACTICE THE ORIGINAL INTENTION

初心如磐，上善若水服务百姓
赤胆忠心，护佑水土保障民生
做好一名水利人
担起构建人水和谐的重担
防水害之灾，危难时挺身而出
不畏险阻，确保一方安澜
是光荣是责任更是一种使命

Our original intention is as solid as a rock, serving the people with goodness as water
We have an utter devotion to protect water and soil and safeguard people's livelihood
Be a good water conservancy person
Take up the burden of building harmony between people and water
Prevent water disasters and come forward in times of crisis
Fearlessly ensure the safety and security of a party
It is an honor, a responsibility and even a mission



SOCIAL RESPONSIBILITY 社会责任

公司忠实履行国企职责，勇担急、难、险、重大任，特别是在汶川“5·12”特大地震抗震救灾、堰塞湖排险，映秀、清平特大山洪泥石流应急抢险等战斗中多次受到嘉奖，为保护人民生命及财产安全，在抗震救灾、抗洪抢险中作出了巨大贡献，被誉为“水利铁军”。

The company faithfully performed its duties as a state-owned enterprise and bravely undertook urgent, difficult, dangerous and important tasks, especially in the earthquake relief and disaster relief of Wenchuan "5·12" great earthquake, disaster relief of Barrier Lake, emergency rescue of Yingxiu and Qingping catastrophic mountain torrents and mudslides, and was awarded many times. In order to protect people's lives and property, the company has made great contributions to earthquake relief and flood fighting and emergency rescue, and is honoured as the "Iron Army of Water Conservancy".

国道213老虎嘴抢险疏浚

National Highway 213 Laohuzui Emergency Dredging





01

02

01 / 清平“8.13”特大山洪泥石流抢险工程 / Qingping "8.13" Catastrophic Mountain Torrents and Mudslides Rescue Project

02 / 治理后的清平河道 / Qingping River after treatment

03

03 / 宣汉特大山体滑坡河道疏浚工程 / River Dredging Project of Xuanhan Catastrophic Landslide

01

02

01 / 映秀“8.14”特大山洪泥石流抢险工程
Yingxiu "8.14" Catastrophic Mountain Torrents and Mudslides Rescue Project

02 / 建成后的截水大坝
The completed cut-off dam

03

04

03 / “5.12”地震安县肖家桥堰塞湖抢险工程
"5.12" Earthquake Xiaojiaqiao Barrier Lake Rescue Project in An County

04 / “5.12”地震安县灌滩堰塞湖抢险工程
"5.12" Earthquake Irrigation Beach Barrier Lake Rescue Project in An County

PARTY BUILDING GUIDANCE

党建引领

党建引领促发展，凝心聚力谱新篇。公司始终坚持以习近平新时代中国特色社会主义思想为指导，增强“四个意识”，坚定“四个自信”，做到“两个维护”，坚定不移践行“两个确立”，切实将党的领导融入公司治理全过程，充分发挥党委把方向、管大局、保落实的重要作用，让“川水善建映初心”党建品牌“亮起来”，为谱写新时代公司高质量发展新篇章提供坚强保证。

The Party building guidance promotes the development, and concentrates efforts to make a new chapter. The company always insists on taking Xi Jinping's Thought on Socialism with Chinese Characteristics for a New Era as the guide, enhancing the "Four Consciousnesses", firmly establishing the "Four-sphere Confidence", achieving the "Two Upholds", unwaveringly practicing the "Two Establishes", effectively integrating the Party's leadership into the whole process of corporate governance, giving full play to the important role of the Party Committee in setting the direction, managing the overall situation and ensuring implementation, making the "Chuanshui Good Construction Reflecting the Original Intention" Party building brand "light up", and providing a strong guarantee for writing a new chapter of high-quality development of the company in the new era.



01

01 / 党史学习教育专题宣讲会 / Special Lecture on Learning and Education of Party History

02

03

02 / “两学一做”学习教育主题党日活动 / "Two Studies, One Action" learning and education theme party day activity

03 / “不忘初心、牢记使命”主题教育党日活动 / "Staying True to the Original Aspiration and Founding Mission of the Party" theme education party day activity



01

02

03

● 01/ “清风堂”廉洁警示教育
“Qingfeng Hall” integrity warning education

● 02/ 支部结对共建活动
Branch twinning and co-building activity

● 03/ 庆祝中国共产党成立100周年主题诵读活动
Theme Reading Activity to Celebrate the 100th Anniversary of the Founding of the CPC

STAFF WORLD 员工天地

让昂扬青春在时代洪流中踔厉奋发，让奋发之心坚如磐石。砥砺向前的我们，沉淀在每一幅精彩的画面之中，都是平凡岗位上最真实的感动。

Let the vigorous youth excel in the torrent of the times, and let the heart of the vigorous effort is as solid as a rock. We are forging ahead, precipitated in each wonderful picture, all of which are the most realistic touching on ordinary positions.



● 2012年省级防汛救灾综合实战演练



01		
02	03	
04	05	06

- 01 / 水利厅系统职工文艺汇演参演舞蹈《筑梦》
The dance Building Dreams in the cultural performance of the staff of Water Resources Department
- 02 / “文明工地”知识竞赛
“Civilization Worksite” knowledge competition
- 03 / 《民法典》和EPC管理培训
The Civil Code and EPC management training
- 04 / 先进职工疗休
Advanced staff medical leave
- 05 / “禾邦杯”首届职工体操大赛
“He Bang Cup” the first staff gymnastics competition
- 06 / 职工运动会
Staff Sports Meeting

求实创新·聚力谱新篇

PRAGMATIC INNOVATION · GATHERING STRENGTH FOR A NEW CHAPTER

倍道兼行, 务实创新提升水平
擘画蓝图, 解放思想开拓进取
启航新征程
需要我们上下一心, 携手共进
承担起新时代水利事业的光荣使命
实现水利事业高质量、可持续的发展
开创新的辉煌

Cover two days journey in one day, pragmatic innovation to enhance the level
Draw a blueprint, emancipate the mind to forge ahead
Set on a new journey
We need to work together, hand in hand
Take up the glorious mission of the water conservancy in the new era
Achieve high-quality, sustainable development of water conservancy
To open up a new glory

FUTURE PROSPECTS

未来展望

时代在前进，社会在发展。遥望前路，我们重任在肩。唯有以持续的创新与进取全身心投入到祖国的水利建设事业，方能回报人民的托付与信赖，我们为此而振奋。辉煌过去，记载着我们豪迈的过往征程；无限的未来，波澜壮阔的绚丽画卷必将在我们一代又一代的水利人手中竞相绘就！

The times are moving forward and society is developing. Looking ahead, we have a heavy responsibility on our shoulders. The only way to return the trust and confidence of the people is to continue to innovate and enterprising, and devote ourselves to the cause of water conservancy construction in the motherland, for which we are excited. The glorious past, records our heroic past journey; infinite future, the magnificent picture will be painted by the hands of our generations of water conservancy people!

GENERAL OBJECTIVE 总目标

建设成为高质量发展的综合施工企业

MISSION OBJECTIVE 使命目标

实现能够承载集团建设板块重任的施工企业

QUALIFICATION OBJECTIVE 资质目标

取得施工综合资质

INDUSTRIAL STRUCTURE OBJECTIVE

产业结构目标

建设成为以“投资+建设+运维”发展战略主线的多元化产业结构

